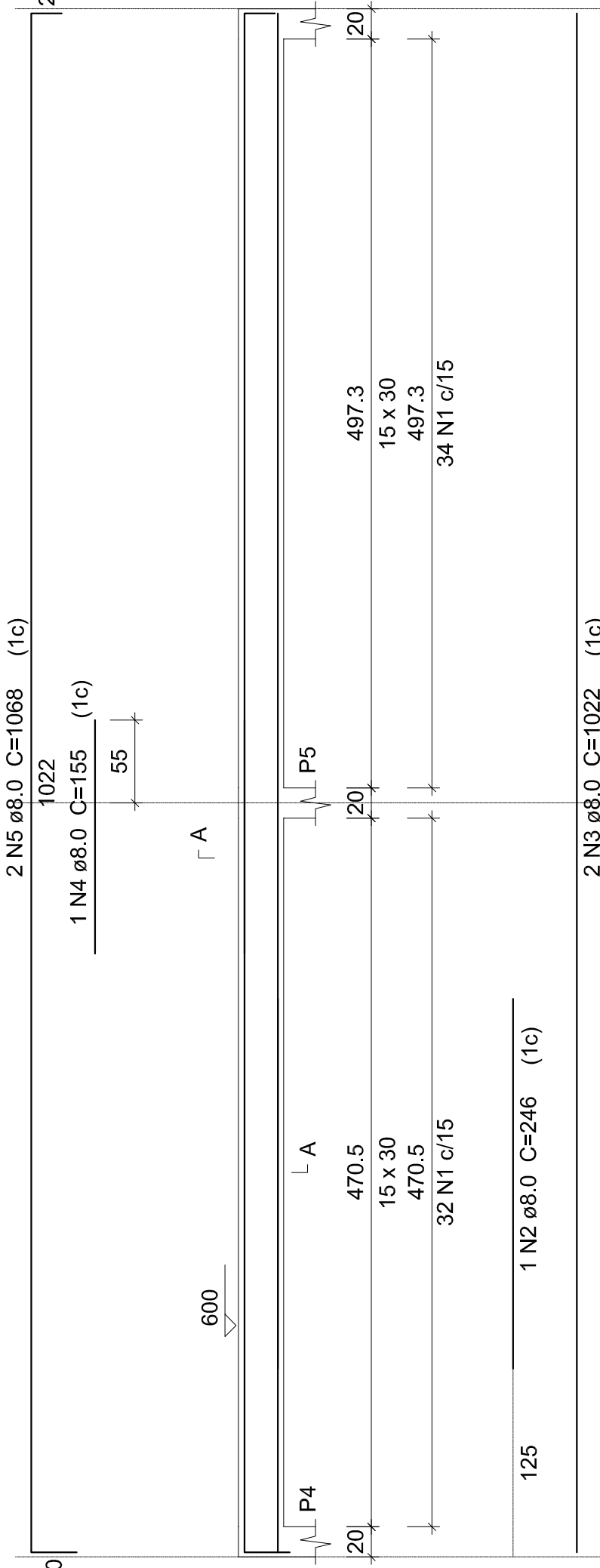


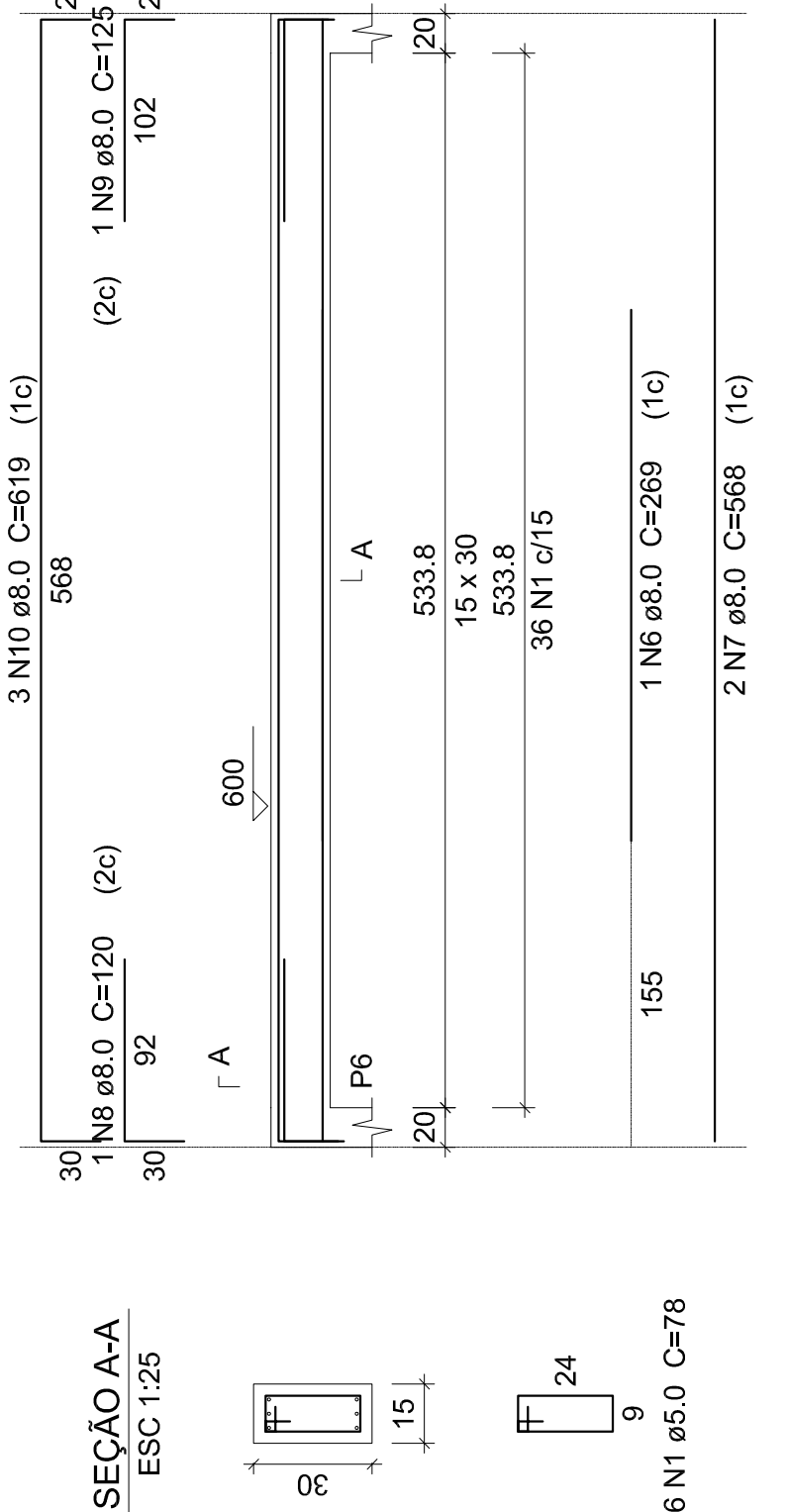
V1

ESC 1:50



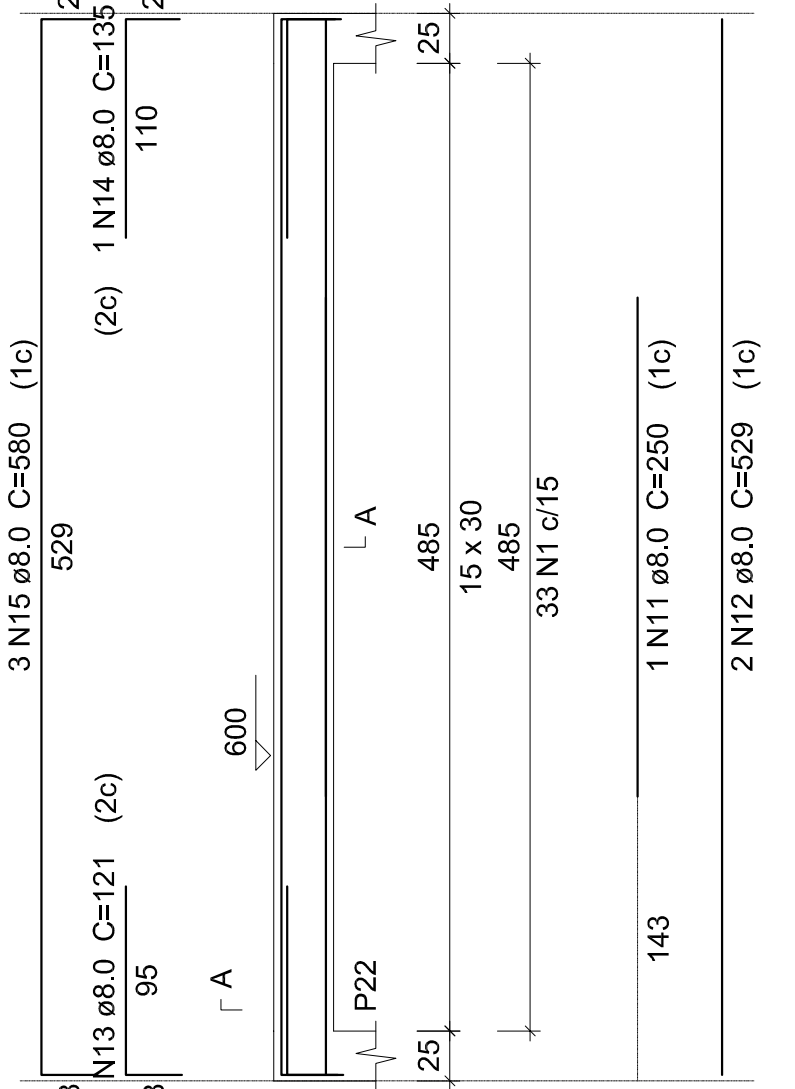
V2

ESC 1:50



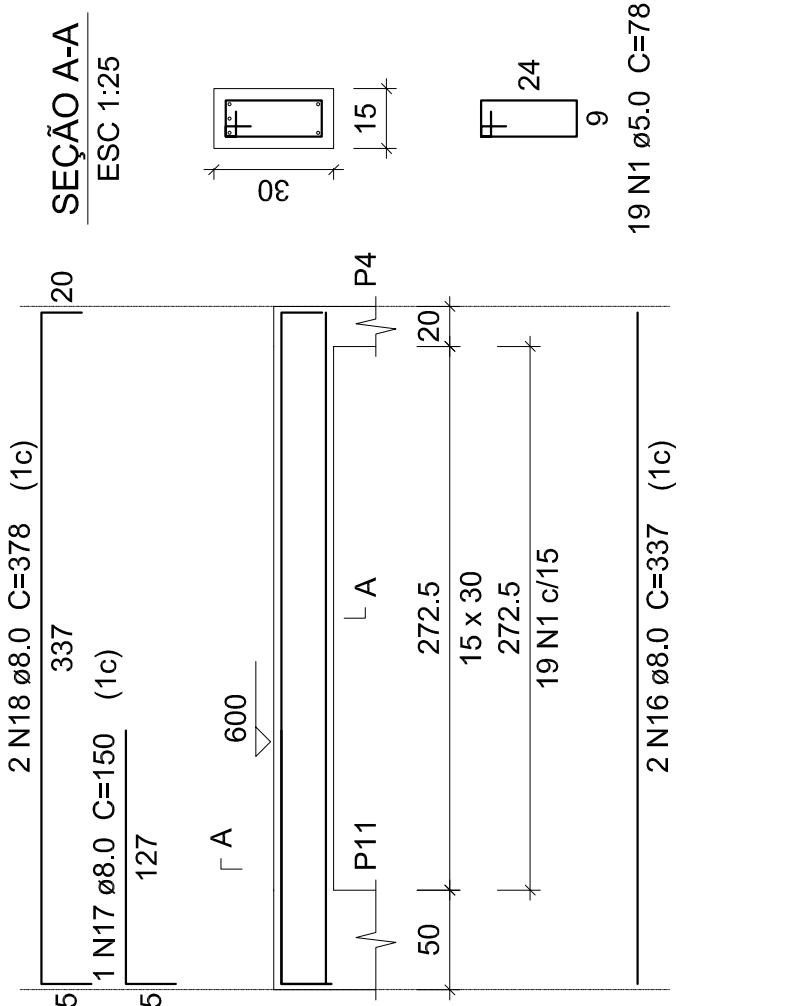
V3

ESC 1:50



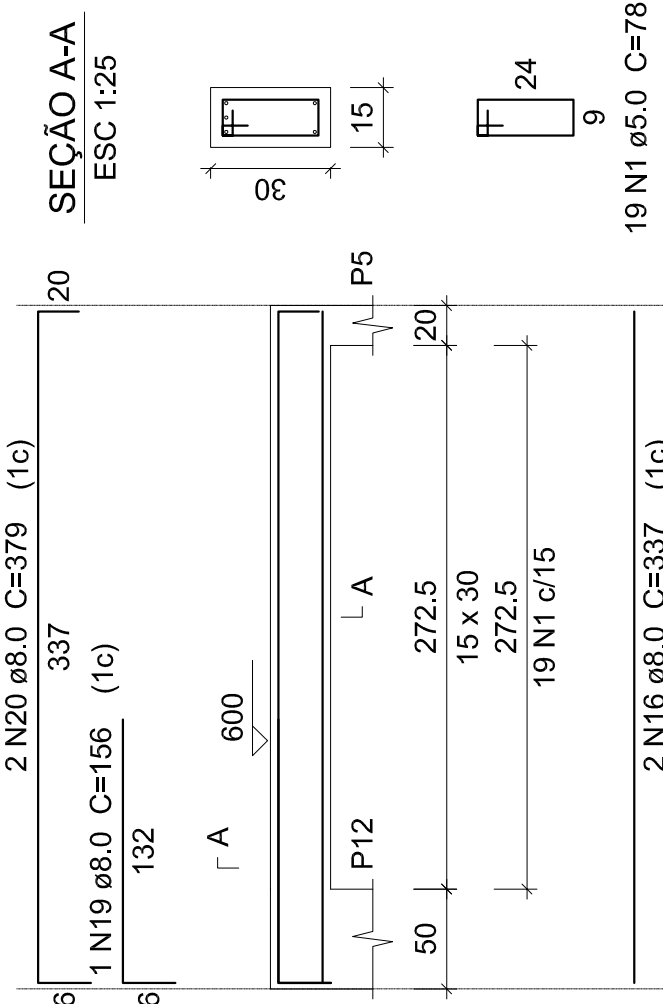
V4

ESC 1:50



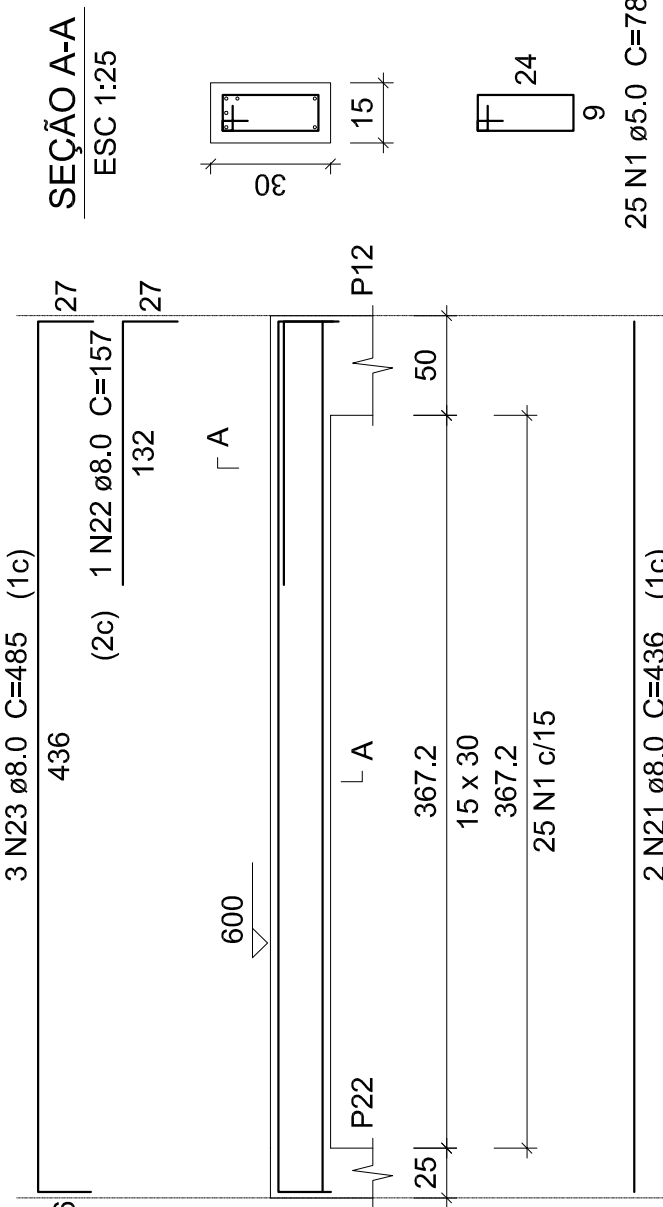
V5

ESC 1:50



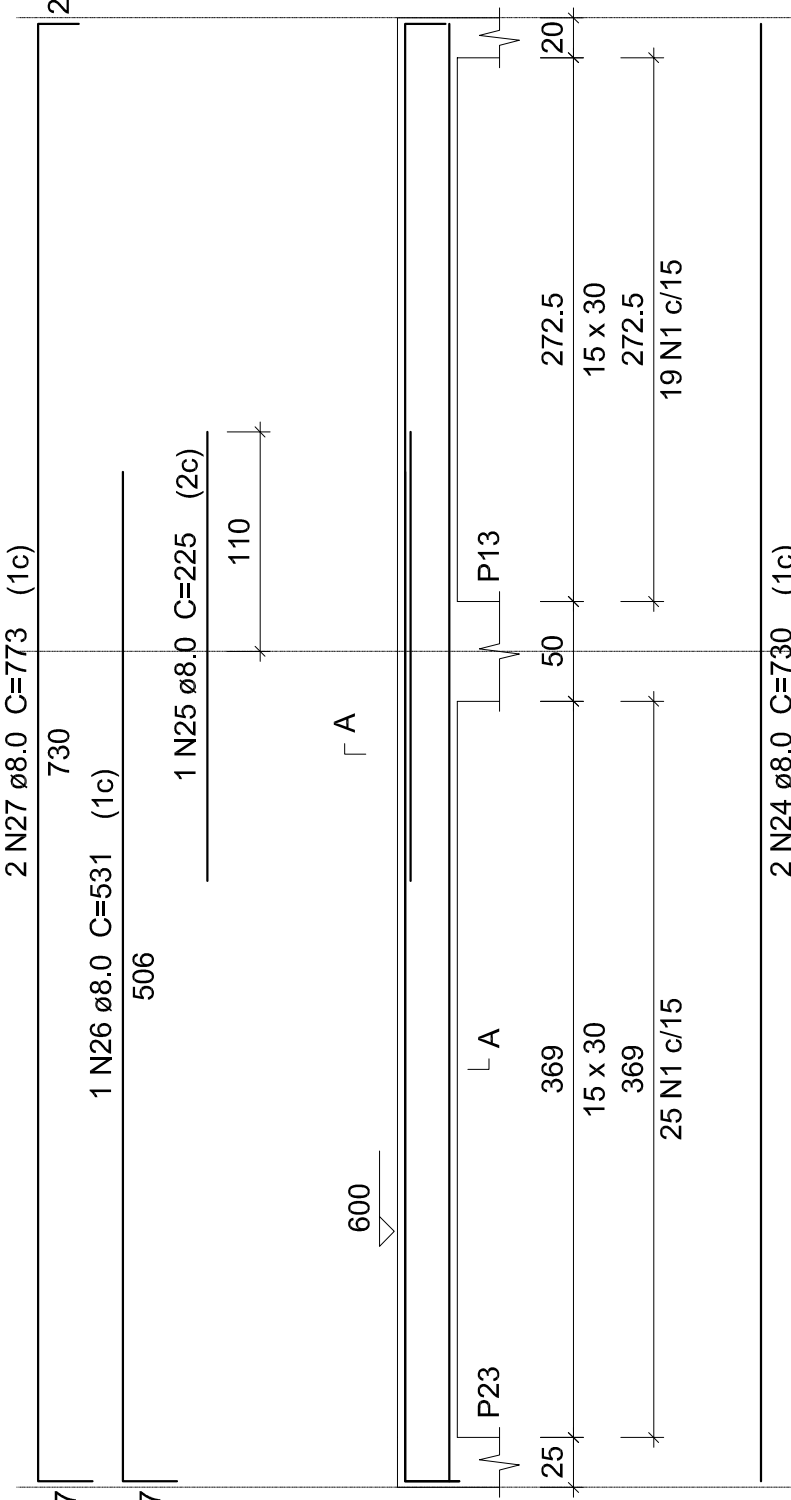
V6

ESC 1:50



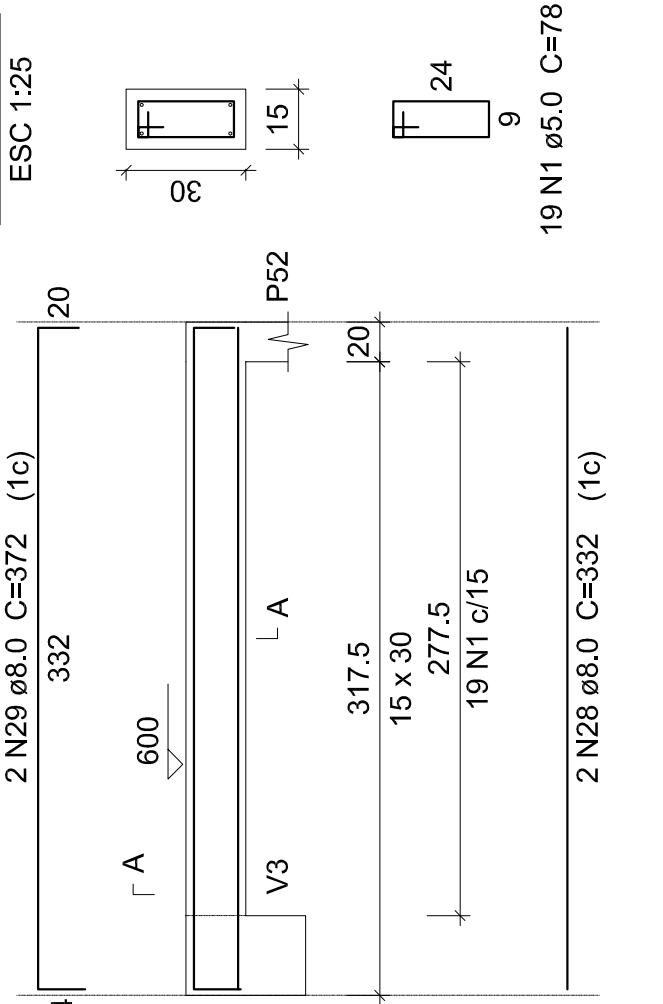
V7

ESC 1:50



V8

ESC 1:50

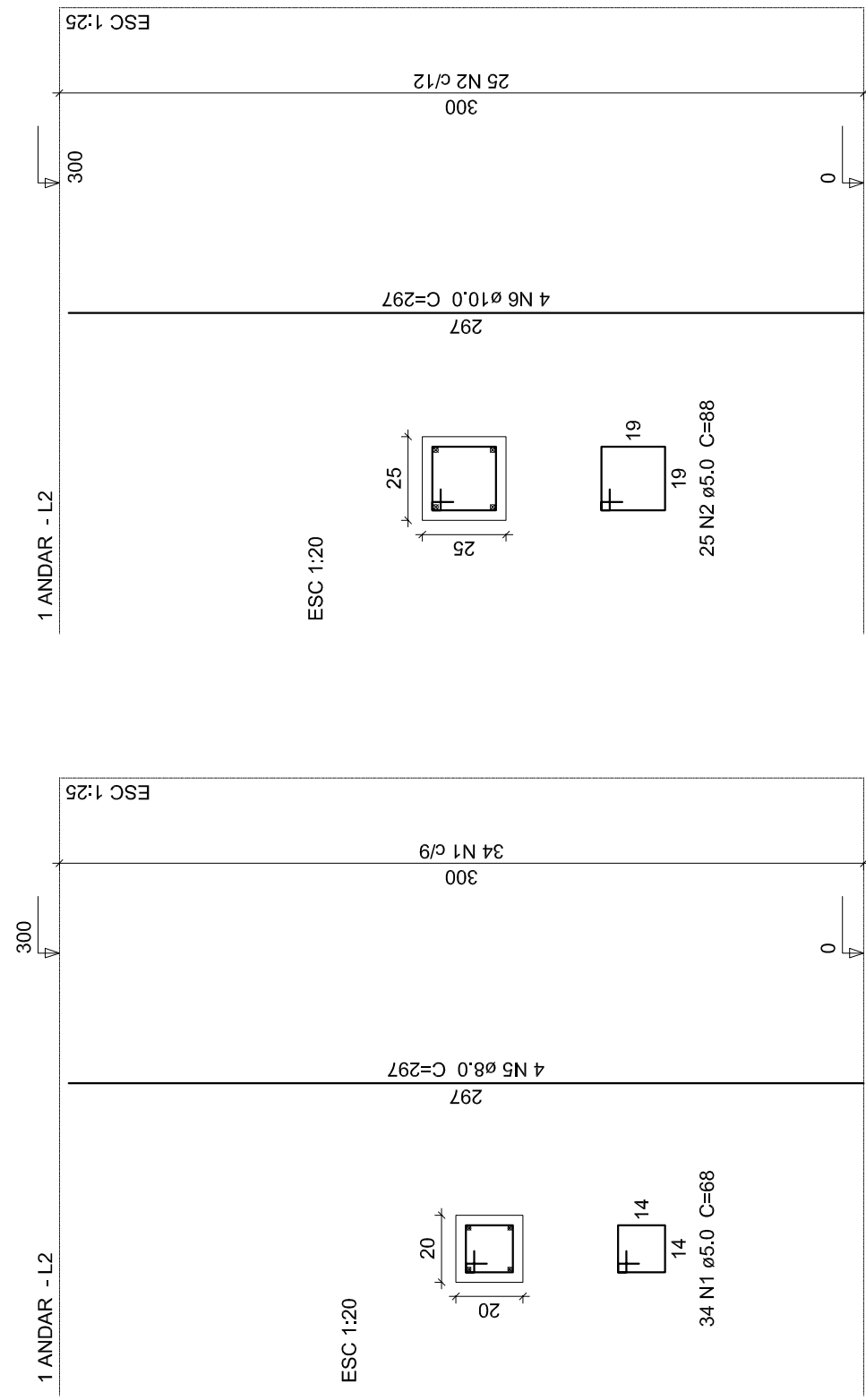


PLANTA DE VIGAS 2º PAVIMENTO

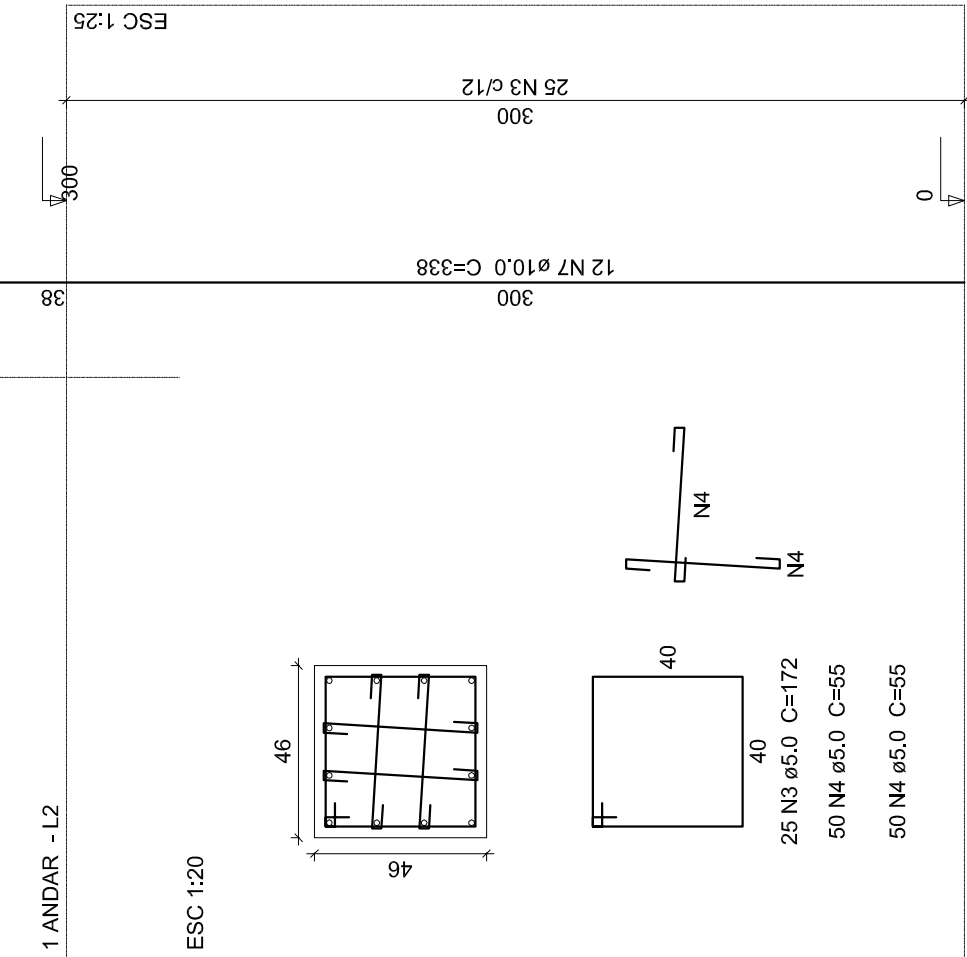
ESC: 1:50

P1 P2 P3 P4 P5 P6 P7 P8 P9 P10 P11 P12 P33

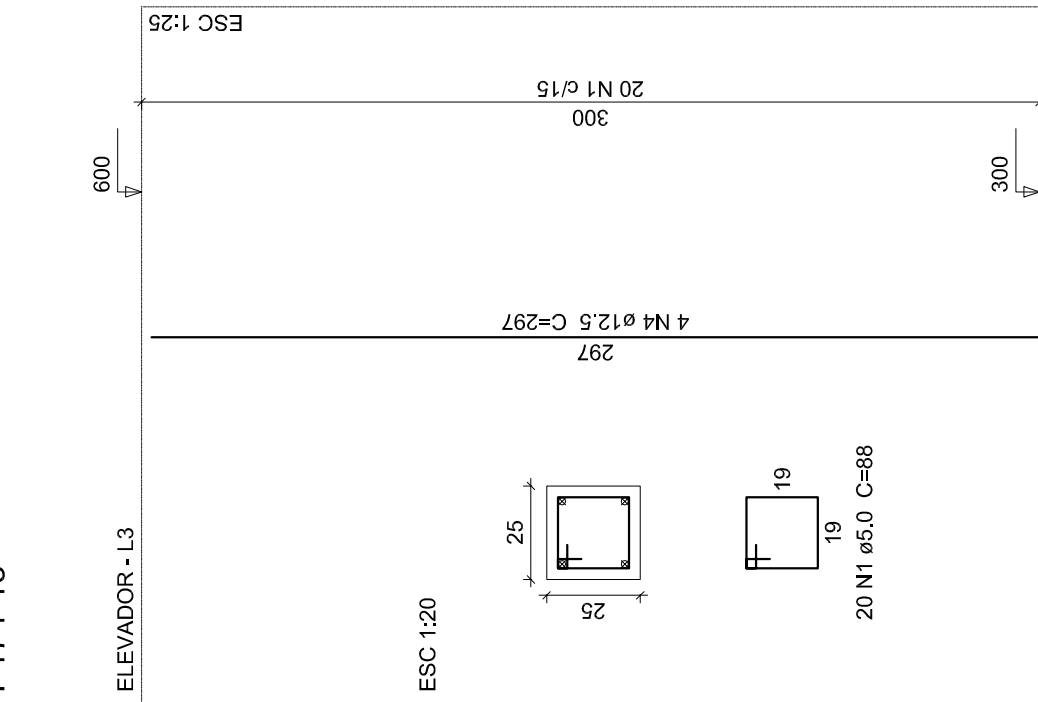
P13 P14 P15 P16 P17 P18 P19 P20 P21
P22 P23 P24 P25 P26 P27 P28 P29 P30



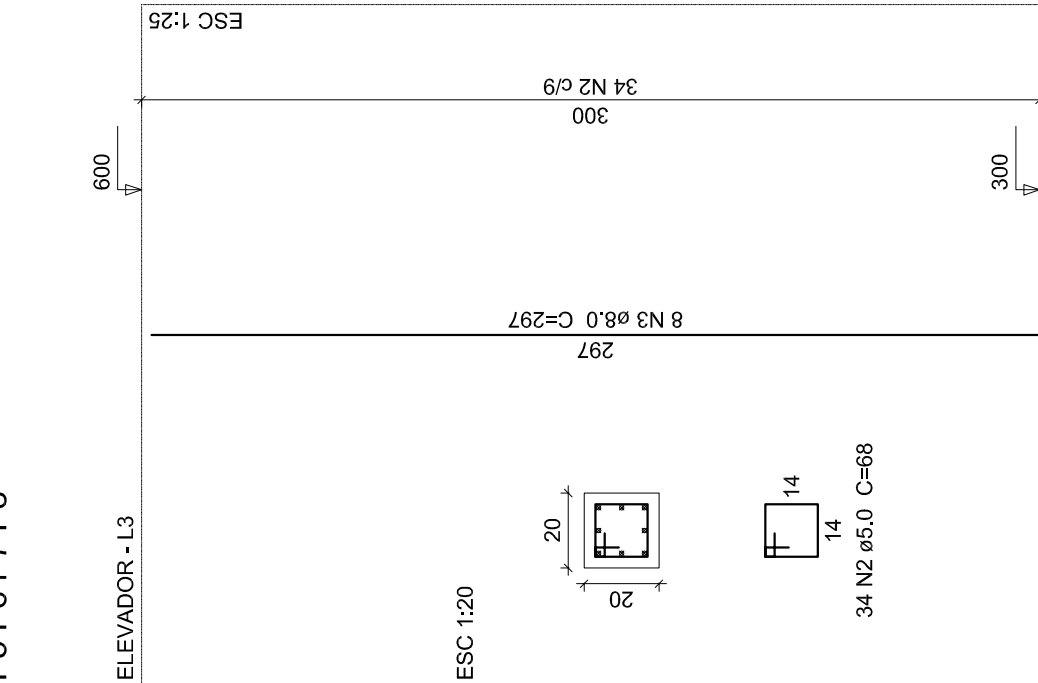
P31 P32



P17 P18



P5 P6 P7 P8



Relação do aço

AÇO	N	DIAM	Q	UNIT	C.TOTAL
CA50	1	5.0	442	(kg)	39658
	2	5.0	450	88	39800
	3	5.0	50	172	8600
	4	5.0	200	55	11000
	5	5.0	100	55	5500
	6	10.0	72	297	21384
	7	10.0	24	338	8112

Resumo do aço

AÇO	DIAM	C.TOTAL	PESO + 10 %
		(m)	(kg)
CA50	5.0	1154.44	67.95
	8.0	1154.44	67.95
PESO TOTAL	10.0	295	200
CA50			409.3

Vol. de concreto total (C-25) = 6,08 m³
Área de forma total = 33,54 m²

PLANTA DE PILARES TERREO

ESC: 1:50

PLANTA DE PILARES 1º PAVIMENTO

ESC: 1:50

Relação do aço

AÇO	N	DIAM	Q	UNIT	C.TOTAL
CA50	1	5.0	40	88	3500
	2	5.0	10	88	880
	3	8.0	33	297	966
	4	12.5	8	297	2376

Resumo do aço

AÇO	DIAM	C.TOTAL	PESO + 10 %
		(m)	(kg)
CA50	5.0	29.7	21.3
	8.0	95.1	41.3
PESO TOTAL	12.5	23.8	25.2
CA50			88.1

Vol. de concreto total (C-25) = 0,89 m³
Área de forma total = 15,6 m²

Relação do aço

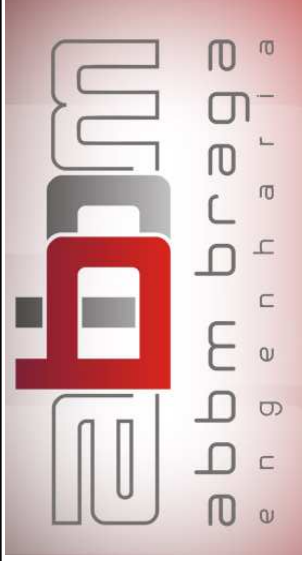
AÇO	N	DIAM	Q	UNIT	C.TOTAL
				(cm)	(cm)
CA50	1	5.0	261	78	20358
	2	8.0	1	246	246
	3	8.0	2	1022	2044
	4	8.0	1	155	155
	5	8.0	2	1088	2136
	6	8.0	1	269	269
	7	8.0	2	568	1136
	8	8.0	1	120	120
	9	8.0	1	125	125
	10	8.0	3	619	1857
	11	8.0	1	250	250
	12	8.0	2	529	1058
	13	8.0	1	121	121
	14	8.0	1	135	135
	15	8.0	3	580	1740
	16	8.0	4	337	1348
	17	8.0	1	150	150
	18	8.0	2	378	756
	19	8.0	1	156	156
	20	8.0	2	379	758
	21	8.0	2	436	872
	22	8.0	1	157	157
	23	8.0	3	485	1455
	24	8.0	2	730	1460
	25	8.0	1	223	223
	26	8.0	1	531	531
	27	8.0	2	773	1546
	28	8.0	2	332	664
	29	8.0	2	372	744

Resumo do aço

AÇO	DIAM	C.TOTAL	PESO + 10 %
		(m)	(kg)
CA50	5.0	203.6	34.5
	8.0	222.2	96.4
PESO TOTAL			
CA50		130.9	

Vol. de concreto total (C-25) = 1,95 m³
Área de forma total = 32,53 m²

REV.	DESCRIÇÃO	DATA	VISTO



PREFEITURA DE SÃO JOSÉ DO VALE DO RIO PRETO
SECRETARIA DE PLANEJAMENTO E GESTÃO

Obra: REFORMA E AMPLIAÇÃO DO NOVO CENTRO ADMINISTRATIVO (ANTIGA COOPERVALE)

Projeto: PROJETO ESTRUTURAL

Disciplina: PLANTAS DE VIGAS 2º PAV E DETALHE PILAR

Escritório Responsável: ABBM BRAGA COMÉRCIO E SERVIÇOS LTDA - ME

Responsável Técnico: JULIO ODONE E BRUNO TELES

Fiscalização e Supervisão:

05

Escala:

Data:

INDICADA

NOV/2018

Paralela